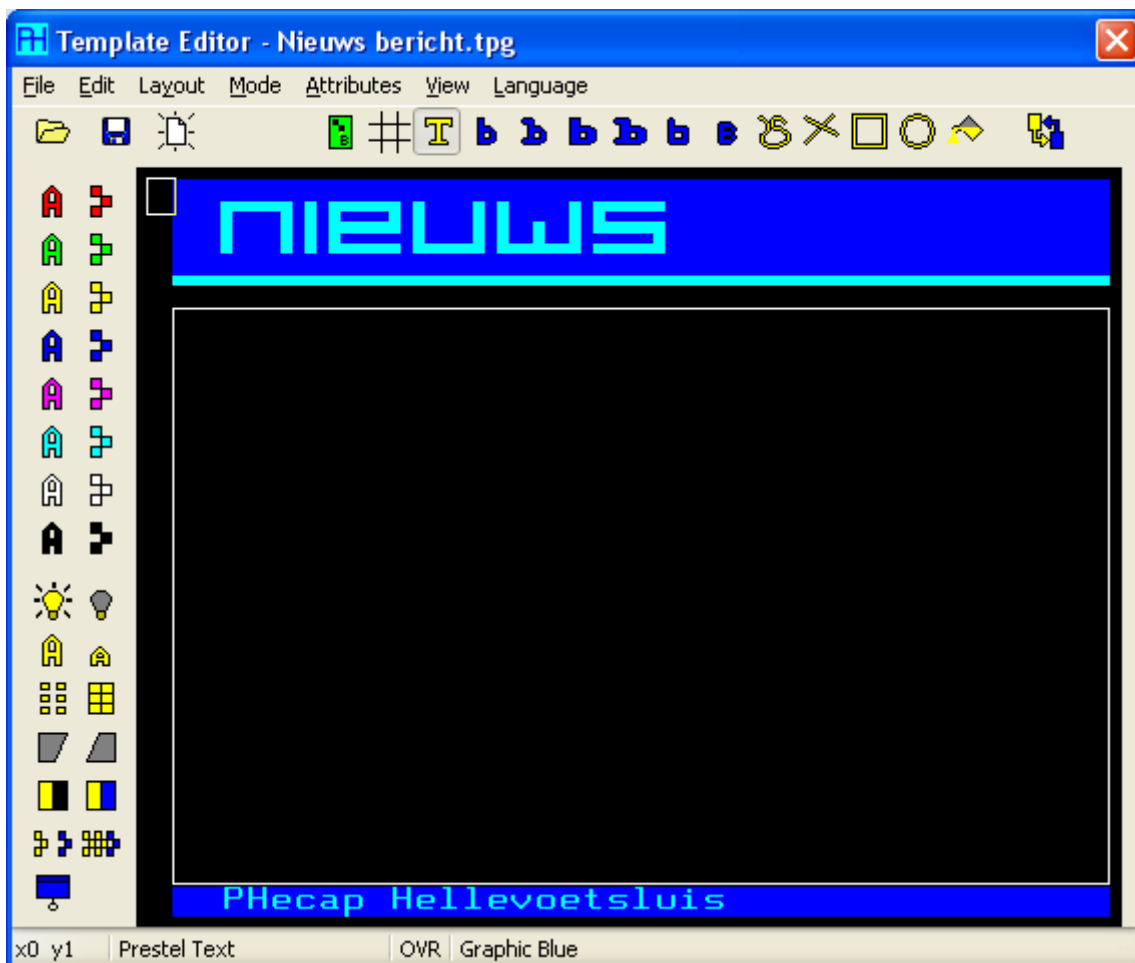


With this program you can automatically create teletext pages from an XML file. The XML file at least must contain one or more messages. Each message must have a category, a title and a message text. It could look like this:

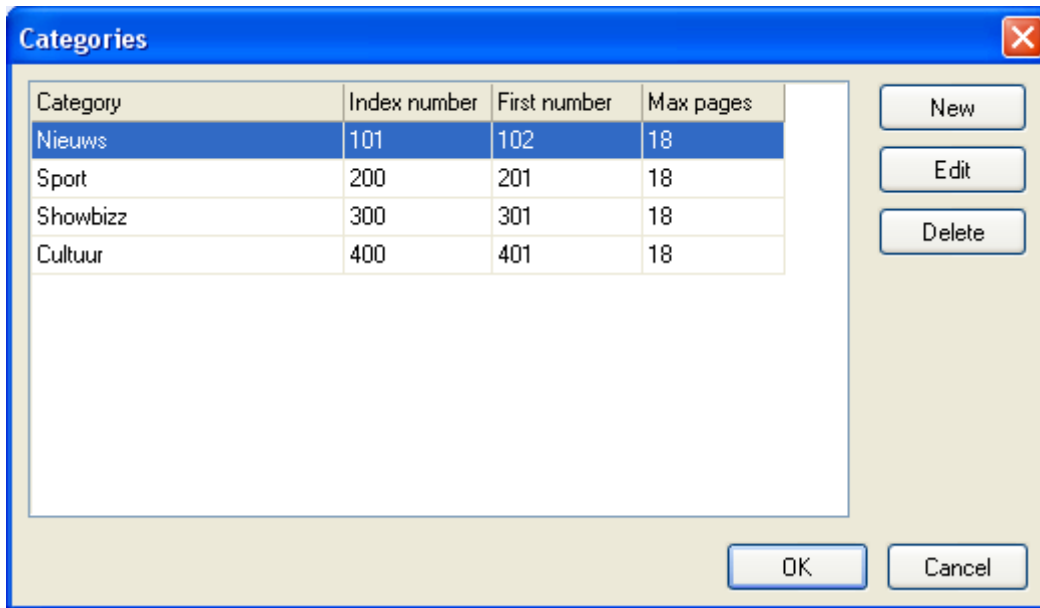
```
<?xml version="1.0" encoding="iso-8859-1"?>
<root>
  <channel>
    <message>
      <category>Nieuws</category>
      <title>Piloot voorkomt drama</title>
      <text>Volgens Portugese media . . . <text>
    </message>
    <message>
      <category>Sport</category>
      <title>Eerste dag in beeld</title>
      <text>De Olympische Spelen zijn . . . <text>
    </message>
  </channel>
</root>
```

With the build in editor you can create templates per category with the desired house style and you can define the text block for the body text.

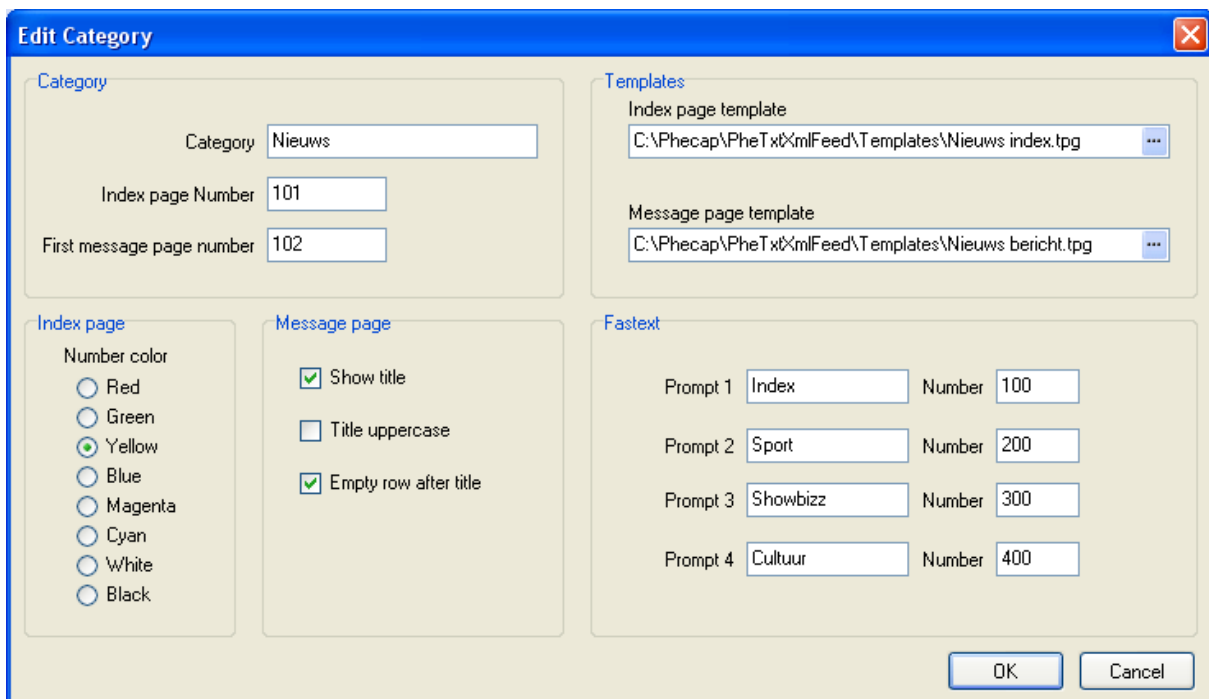


Per category you need two templates, one for the index page and one for the message page. The maximum number of message pages per category is defined by the number of rows within the text block of the index page.

Next fill in the properties per category.



Fill in the name of the category as in the XML file. Furthermore the category is connected to the templates you made before. Also fill in the maximum number of pages per category.



Fill in other properties of the category such as the Fastext links, color of the page number of the index page etc.

In this window you can fill in and change the XML schema.

The screenshot shows a window titled "XML Schema" with a close button in the top right corner. Inside the window, there is a section labeled "XML Elements" containing several input fields and a preview of the XML output.

The input fields are:

- Root:
- Channel:
- Message:
- Category:
- Title:
- Text:

The XML output preview is:

```

<root>
  <channel>
    <message>
      <category>
        Maecenas
      </category>
      <title>
        Lorem ipsum dolor sit amet.
      </title>
      <text>
        Mauris rhoncus gravida augue sed aliquet.
        Phasellus non massa tellus, ut bibendum
        bauris. Cras euismod, dui vel elementum
      </text>
    </message>
  </channel>
</root>

```

At the bottom of the window are "OK" and "Cancel" buttons.

The names of the elements can be modified and you can select an extra level (channel).

The program works together with the programs PheFtpserver and PheTxtServer.

In PheFtpServer (PheUserAdmin) you can create a user in the same way as a normal remote user. Give this user permissions for the page numbers as filled in at the category properties.

You can install the PheTxtXmlFeed program on the same computer as the inserter or on another computer with an internet connection. The communication is always done through the FTP protocol.

The program can copy a XML file from a local drive or from a network drive or from a web server.

In this window fill in and select the above mentioned.

General Options

XML Source

File

Web

Scan interval Seconds Start scan at start program

Teletext

Use Fasttext

PheTxtServer

Name

FTP Host FTP User ID FTP Password

FTP Port Passive mode

Use Proxi Proxi

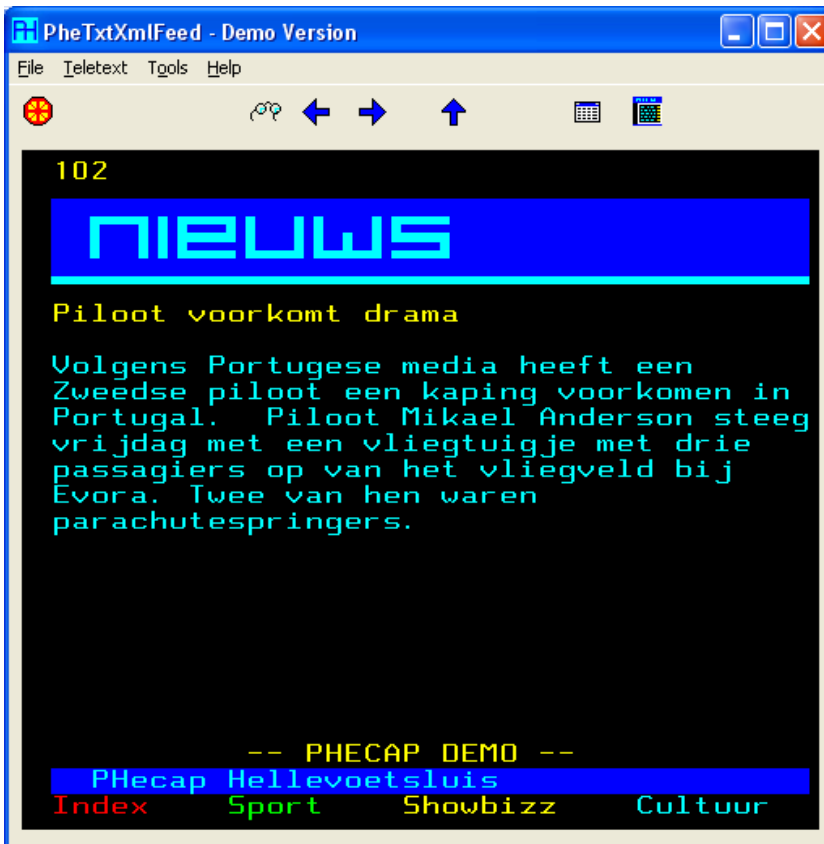
You can test the XML file together with the templates before transmitting to the PheTxtServer program.

The generated pages can be viewed one by one

See the examples on the next page.



Example of an automatically generated index page.



Example of an automatically generated message page.