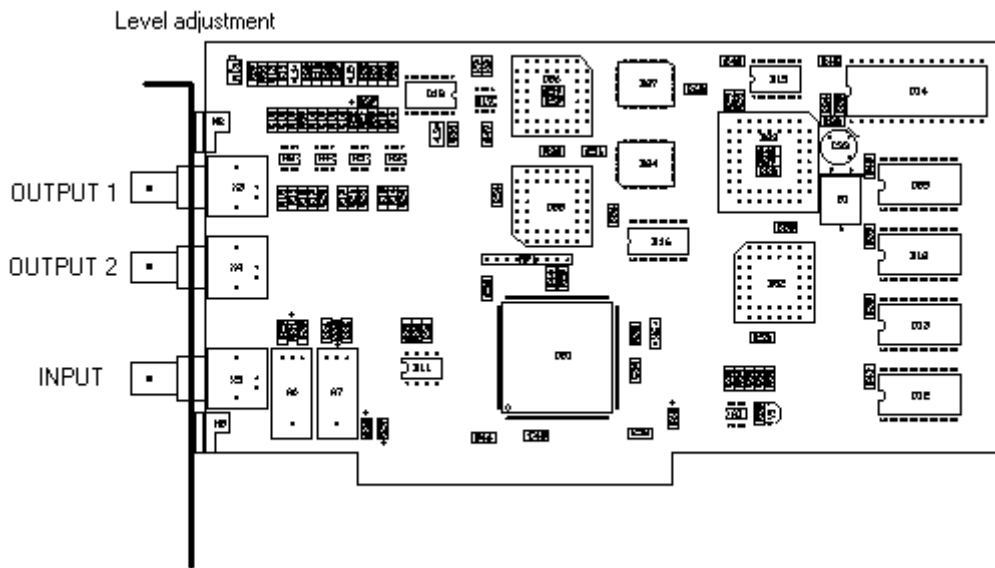


PHETEXT Teletext Inserter (classic) Installation Instructions



System demands:

- IBM compatible computer with a free PCI-slot.
- Windows XP (pro) or Windows 7 (pro) operating system, 32 bits only.
- 20 Mb free disk space.
- CD-rom player

Hardware Installation:

- Disconnect the power of the computer.
- Open the case.
- Place the inserter carefully in the free PCI-slot and lock the bracket in the case with a screw.
- Close the case.
- Connect a video signal to the input connector of the inserter (1Vpp).
- Connect one of the two outputs to the modulator or to the video input (scart) of a television set.

The PheText inserter is fully adjusted so there is no need for user adjustments.

Driver Installation standard (works in most cases)

- Place the CD-rom in the CD-rom player.
- Connect the power to the PC and switch it on.
- When the computer is turned on and Windows is started you will see a message "New hardware found". Browse to the CD and the driver will be found and installed.

Install the driver as an user with administrator rights.

Some motherboards will not accept the standard driver. In that case install the Windriver for the teletext inserter.

- Uninstall, when installed, the standard driver in the device manager.
- Reboot the computer.
- Ignore the Windows messages about new hardware found.
- Go to the folder "Drivers\PHeText_WinDriver" on the CD.
- Run the file "Install Windriver.bat".
- Allow Windows to install all drivers (2 times).

Install the driver as an user with administrator rights.

Software Installation Windows XP (Pro) or Windows 7 (Pro):

- Run "Setup.exe" on the CD.
- Select and install the Phetext program from the Setup screen.
- When needed Select and install the PheTxtServer program from the Setup screen.
- After installation start PheText, ignore any error messages and go to the menu "Options -> Set Inserter Interface" and select the "PCI Interface". When Windriver is installed also check "Windriver".
- Do the same for the program PheTxtServer when installed.