

Minimum Requirements

PC Celeron 1000 MHz, hard disk 40Gb, 256Mb ram, CD-Rom.
One free PCI slot.
Windows Windows XP (Pro) or Windows 7 (Pro).
(This manual is based on Windows 7)

PHeText Teletext Inserter

See “PHETEXT Teletext Inserter Installation Instructions”.

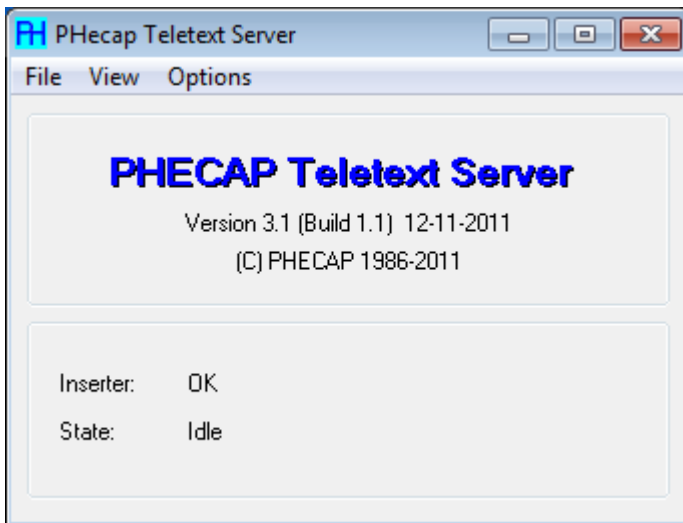
PHeTxtserver

Run the PHeTxtServerSetup.exe install from the CD (Directory PHeTxtServer) or downloaded from the PHeCap website.

When the program PHeFtpServer is not installed, the setup program will ask to do this first.

During install use the defaults.

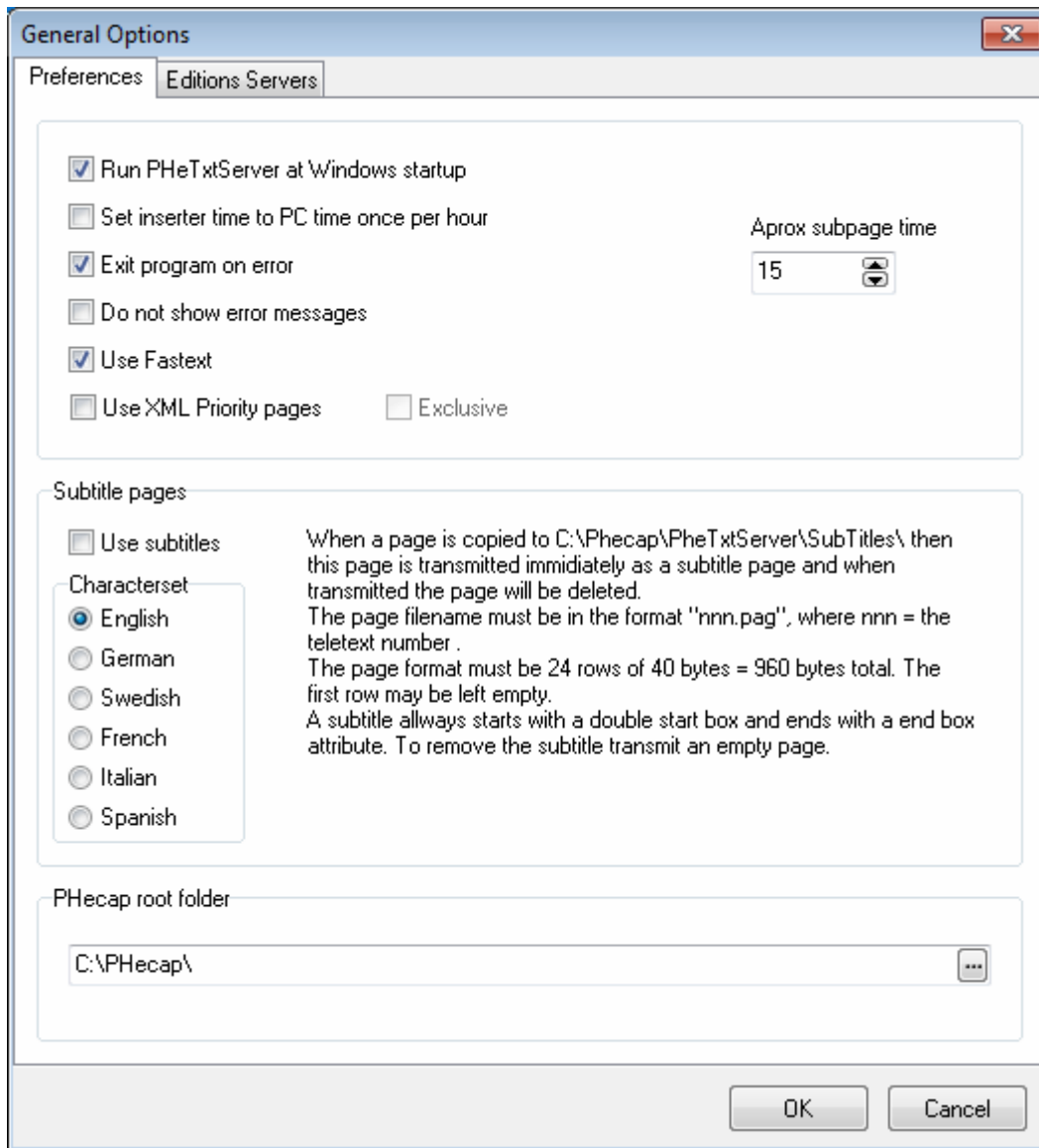
After installation run the program.



PHeTxtServer is used for the communication between PHeText and PHeWebTxt and the teletext inserter hardware.

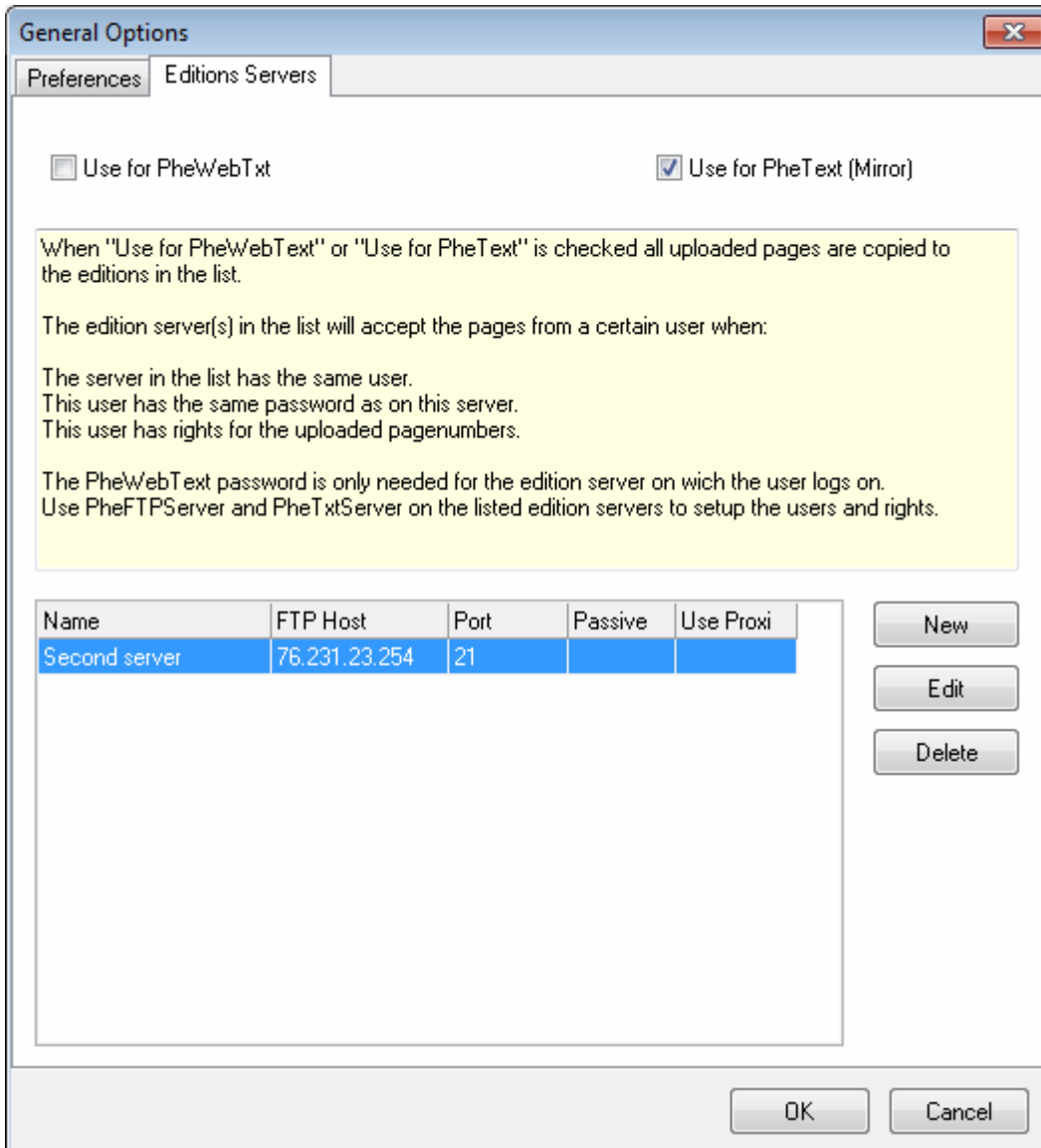
With PHeTxtServer you also can do specific inserter settings such as the broadcaster name in the header, the format an language of the date and time in the header, witch lines are used for teletext etc.

Click menu “Options” and select tab Preferences.



Check "Run PHeTxtServer at Windows startup" if you want to start the program automatically. Check "Use Fasttext" if needed.

PHeTxtServer Mirror



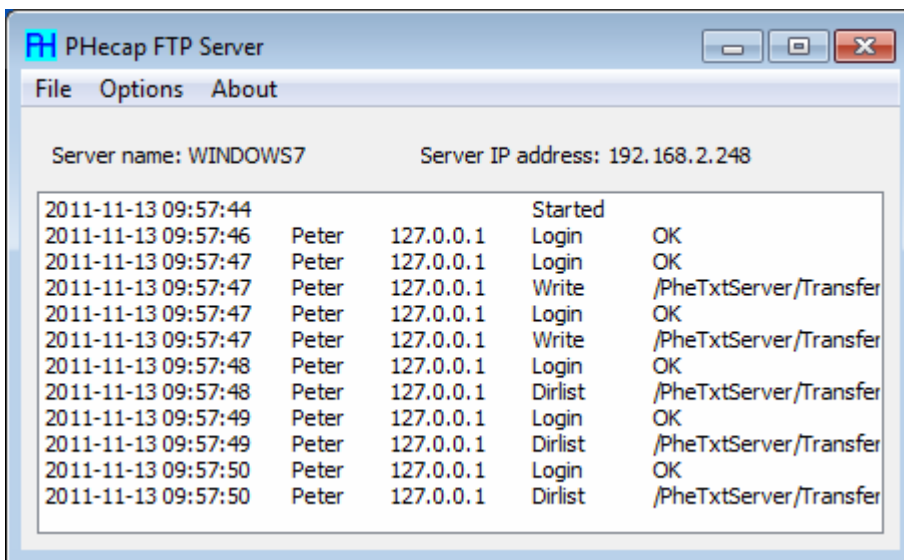
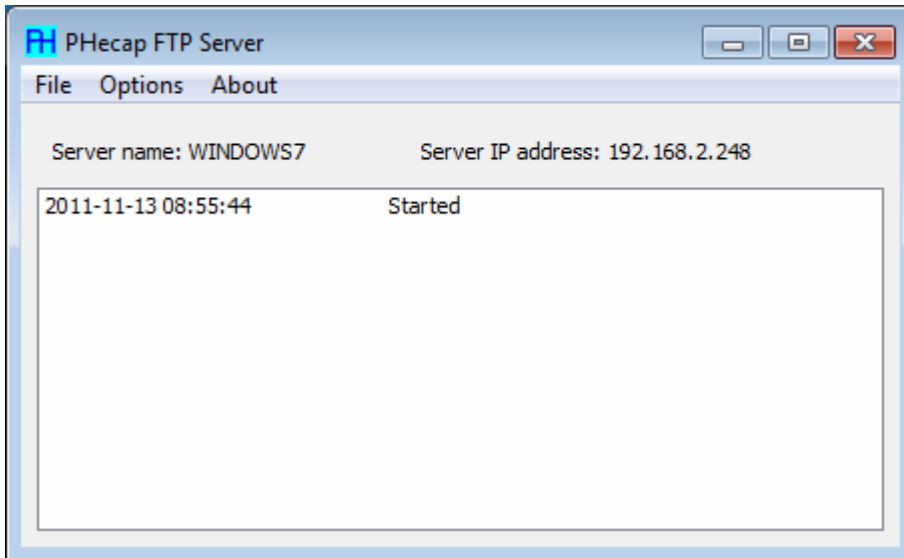
With the mirror option you can connect two or more teletext inserters so they all transmit the same pages.

PHeFTPServer

Run the PHeFTPServerSetup.exe install from the CD (Directory PHeFTPServer). Use the defaults. This also will install the program PHeUserAdmin.

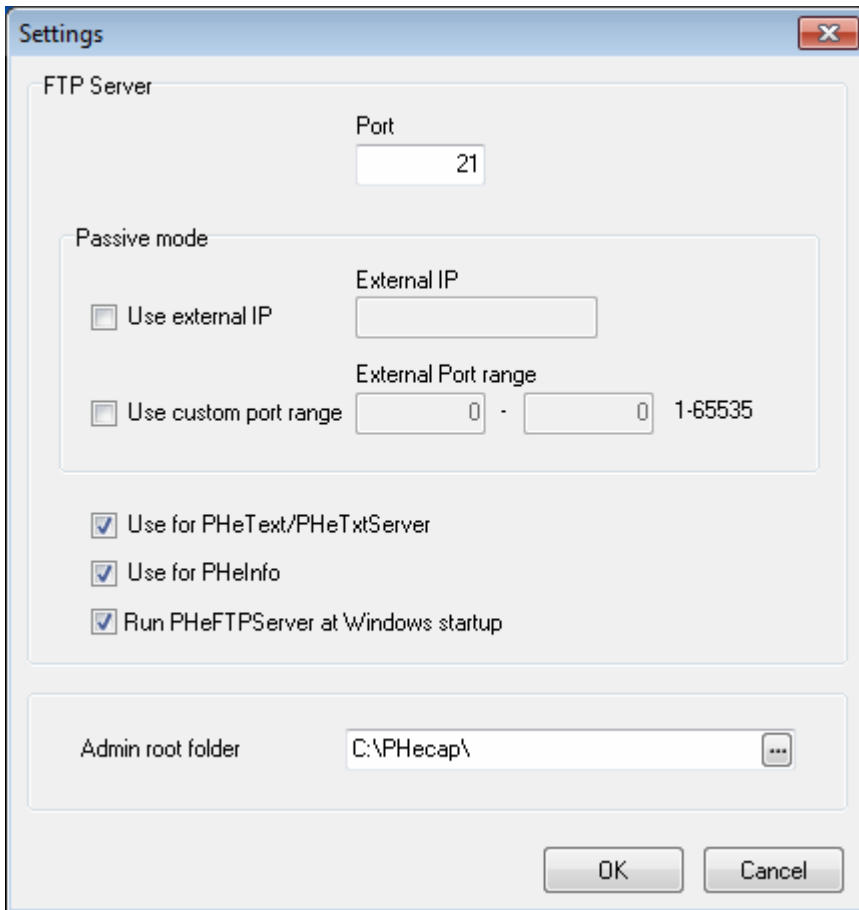
With PHeUserAdmin you can create users for PHeTxtServer and PHeInfo and also manage all user permissions for teletext page numbers.

After the installation is finished run the PHeFTPServer program.



The log screen shows every FTP action. This screen shows only the last 100 lines. All lines are written to the log file in the same directory as the PHeFTPServer program. In the file menu you can view the log file.

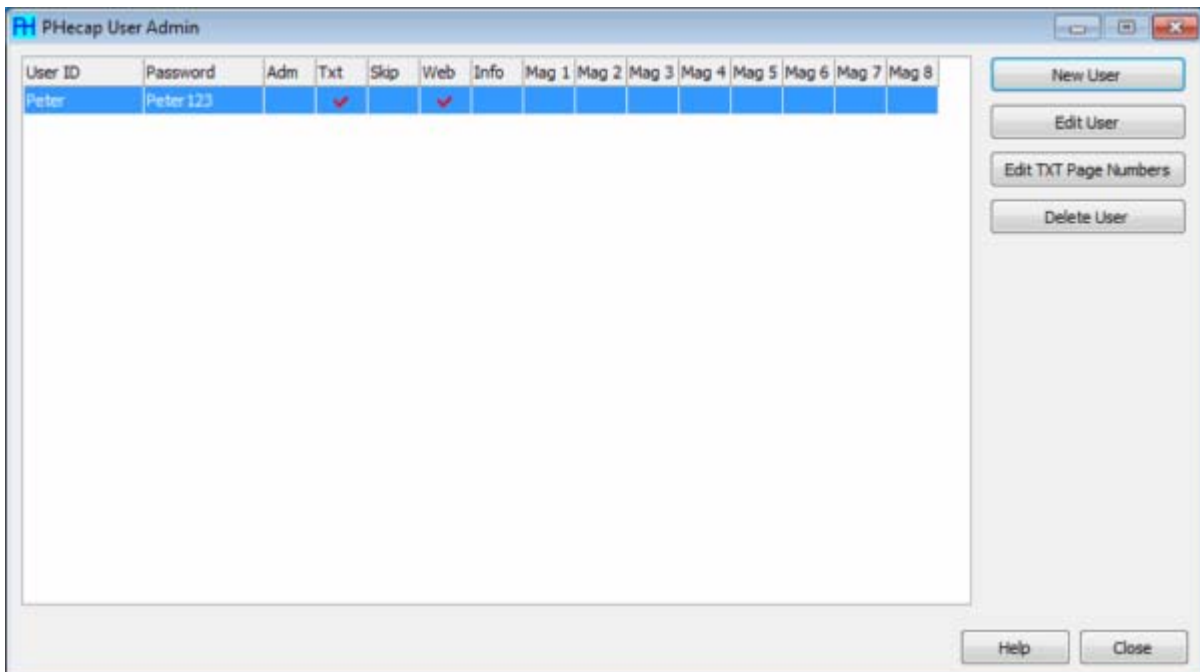
Click the menu "Options", "Settings".



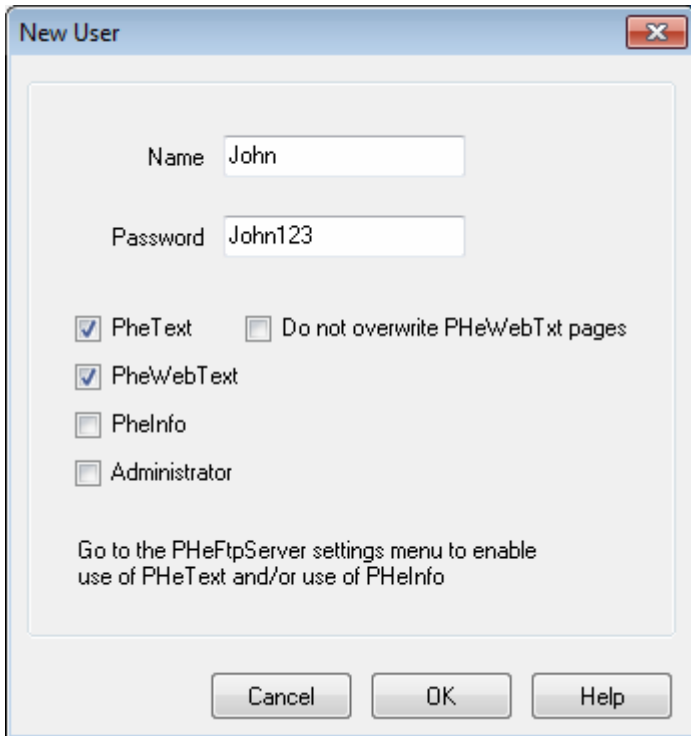
Check "Use PHeText" and/or "Use PHeInfo" if needed. Change the port number when needed. Check "Run PHeFTPServer at Windows startup" if you want to start the program automatically.

Click "OK".

Now start PHeUserAdmin.



Click "New User"

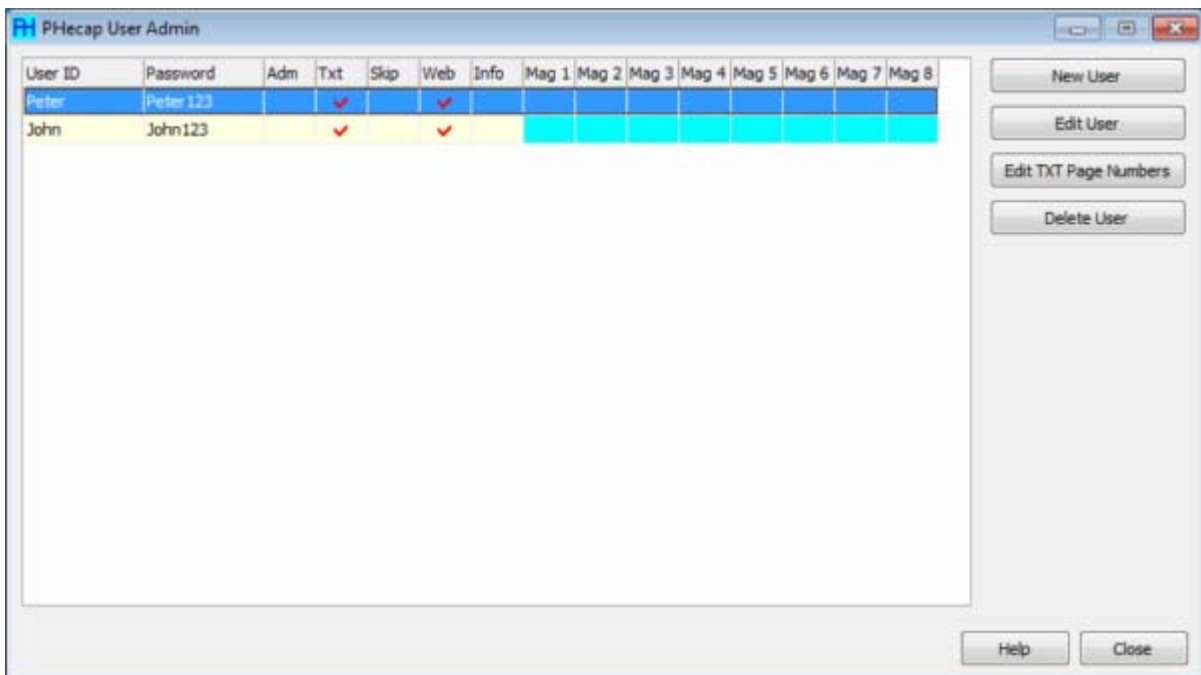


Fill in the name and password, check PHeText.

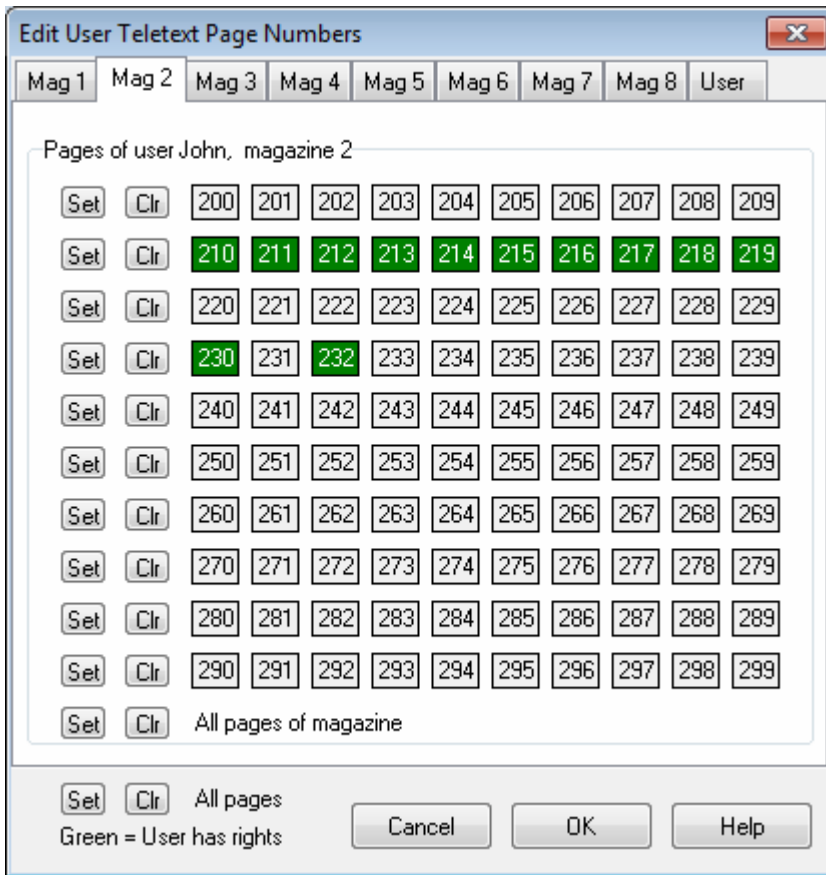
If “Do not overwrite PHeWebTxt pages” is checked the PHeWebTxt pages are not overwritten by this user even when this user has permission for these pages.

TIP: Create two users for PHeText, one with “Do not overwrite” checked and one with with “Do not overwrite” unchecked both with permissions for all pages, use the first one if you wish to replace the PHeWebTxt templates.

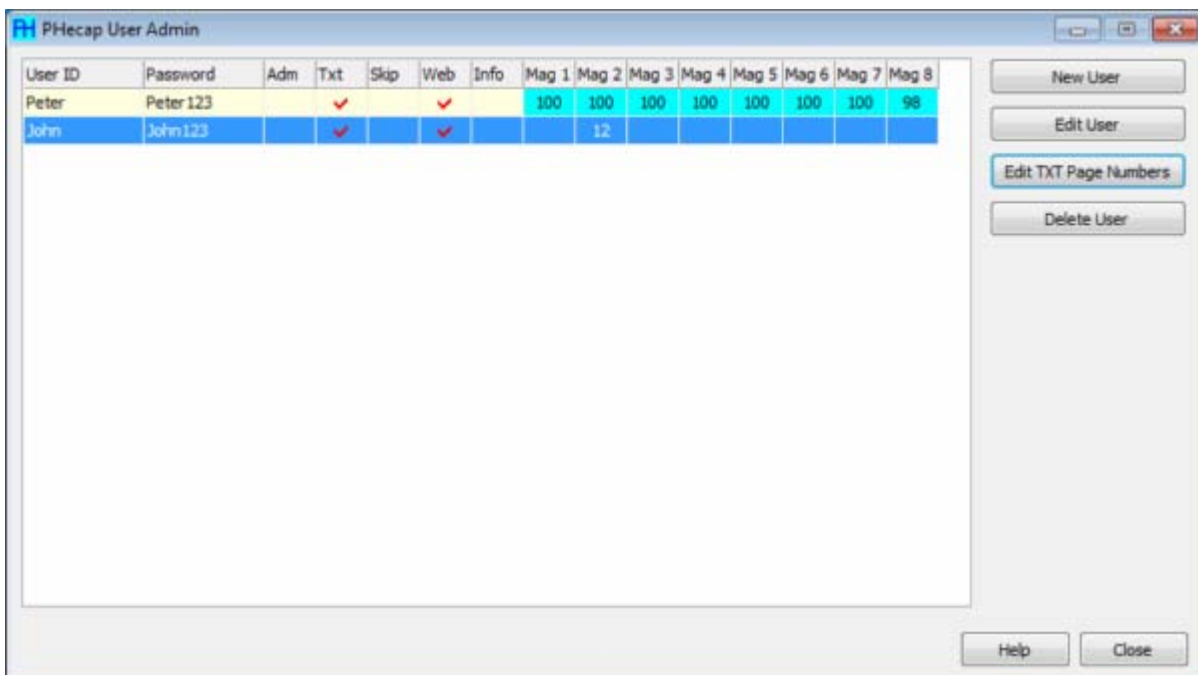
PHeInfo users are for the PHeInfo cable info program and Administrators can browse, read and write files with a FTP client.



Now you see two user for PHeText and PHeWebTxt. Click “Edit TXT Page Numbers”.



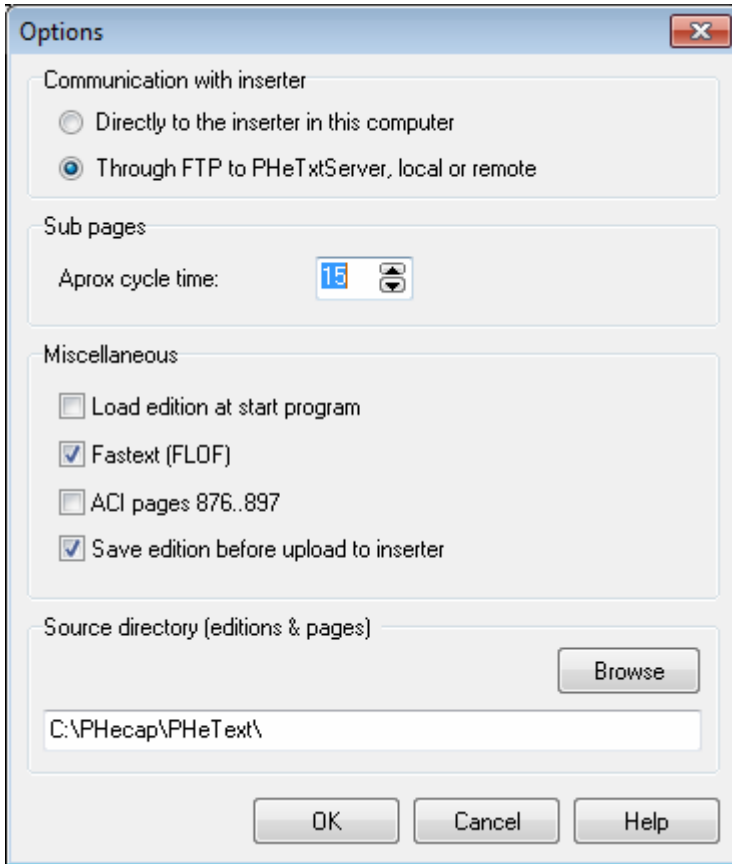
First select the desired magazine tab and then select the page numbers for this user. Click "OK".



Now you see the number of pages per magazine for the users. User John has permissions for 12 pages in magazine 2. User Peter has permissions for all pages (except the two test pages).

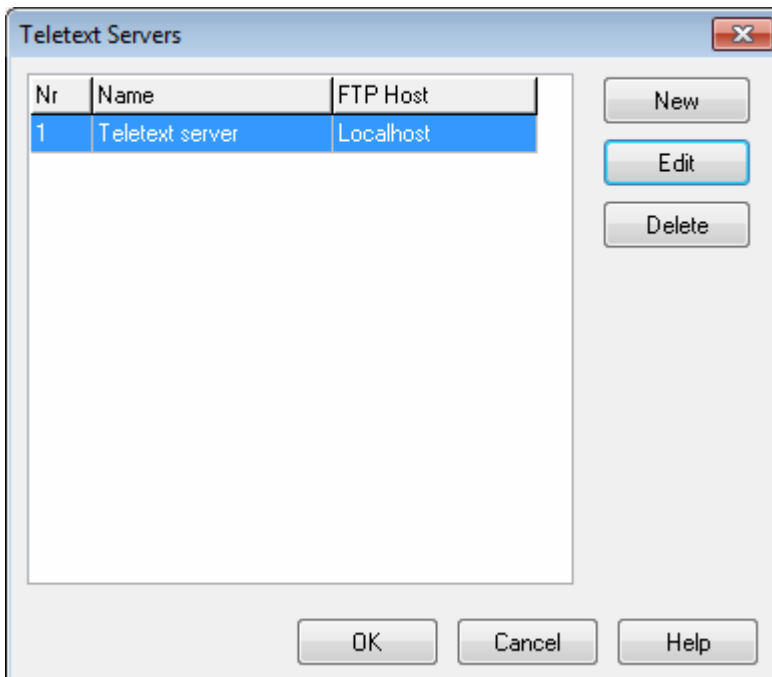
Use of the PHeText program

Start PHeText and click menu "Options/Options"

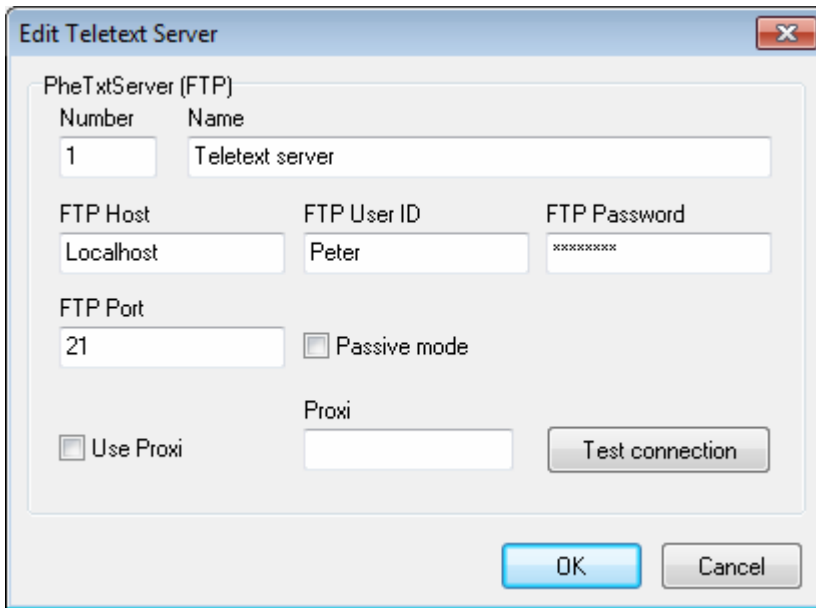


Select "Through FTP to PHeTxtServer, local or remote" and click "OK".

Now create a teletext server by clicking menu "Options/Teletext servers"

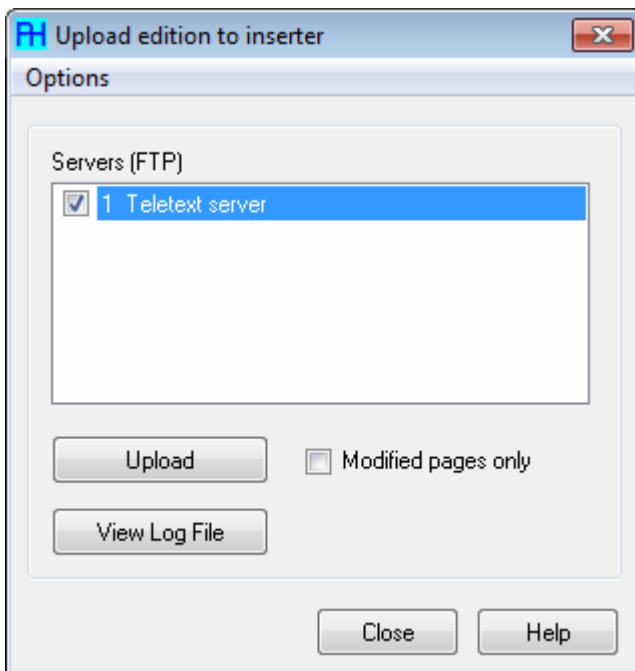


Click "New" to create a teletext server.



Fill in the FTP Host, UserID and Password. If you use the PHeText program on the same computer as the PHeTxtServer, you can fill in "LocalHost" or 127.0.0.1 as the FTP Host.

TIP: Create two teletext servers for the same FTP Host with different user, one can upload all pages and the other cannot upload PHeWebTxt pages, see also the tip at PHeUserAdmin.



When you upload the edition always select one or more servers.
You cannot select two servers at the time for the same hosts, see also the tip above.

PHeWebTxt (option)

With the PHeWebTxt program you can edit teletext pages through the web. It is installed as a service on a Windows computer in the same directory as the PHeTxtServer program. It is a stand alone webserver and uses default port 80 (de default http port). When you already have a webserver on the same PC then you must use another port. You can configure another port by editing the PHeWebTxt.ini file. Change the port into 8888 for instance. You must then stop and start the service (Administrative Tools | Services).

In the PHeUserAdmin program you create users for this system.

When PHeWebTxt runs then you can access it through the network by typing the URL in your browser: <http://hostname> or <http://hostname:8888> when not the default port is used. Of course you can fill in the IP address instead of the hostname.

The administrator has to create pages with a text block (save the page with the text block button down) in the PHeText program and send them to the server.

Now with the PHeWebTxt program you can edit the text block and it is possible taking pages in or out broadcast.